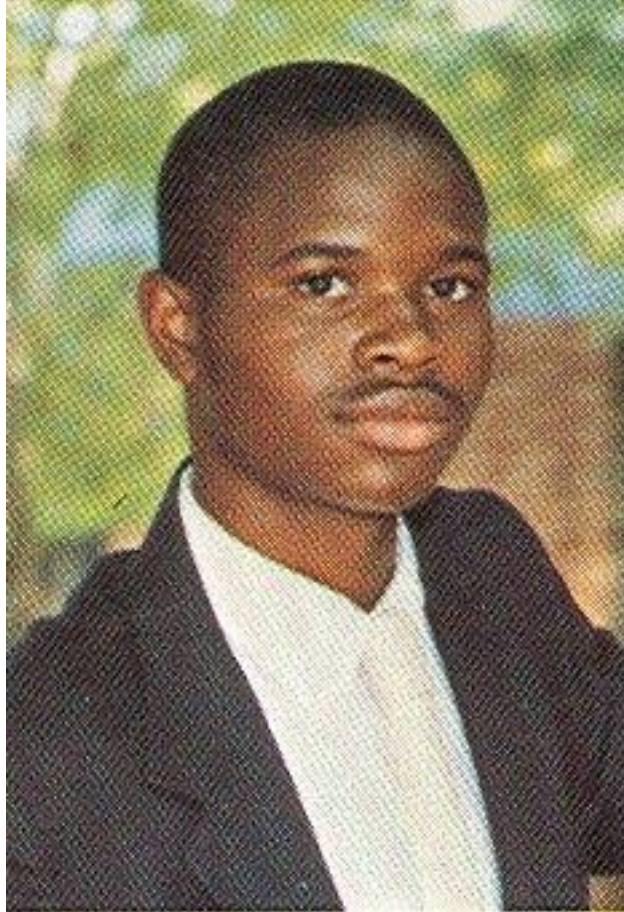


GO WEST.



Center for Fostering Success
WESTERN MICHIGAN UNIVERSITY



Who Am I?

GO WEST.



Center for Fostering Success
WESTERN MICHIGAN UNIVERSITY



The Seita Scholars Program (Est. 2008)

A Program History and Overview

wmich.edu/fosteringSUCCESS

GO WEST.



Center for Fostering Success
WESTERN MICHIGAN UNIVERSITY

Overview, Goals and Program Composition

PROGRAM OVERVIEW

Video: <https://www.youtube.com/watch?v=rUwaqE9a77A>

wmich.edu/fosteringSUCCESS

About the Seita Scholars Program

- **The Seita Scholars Program is:**
 - A full tuition scholarship for foster care students and alumni of care.
 - Note: The scholarship does not cover books, fees and housing expenses.
 - A comprehensive support program serving 160 youth (each of the past 3 years) who experienced foster care.
 - Designed to increase the success of students who experienced foster care and enrolled in higher education at Western Michigan University.
 - Provides opportunity for year-round housing

Program Goals

- Create Transitions
 - that lead to success in college and career for WMU students from foster care ages 18 to 25 years old.
- Develop a Community of Scholars
 - among WMU students who have aged out of foster care, and create a safe community to deconstruct and reconstruct identity.
- Educate
 - WMU students from foster care and their support network to enhance their professional skill set.
- Transform
 - WMU students from foster care by integrating experiences from students' past to build opportunities for their future.

Seita Scholars vs. FTIAC

Fall GP	Seita Scholars	FTIAC
2008-09	1.44	2.84
2009-10	2.29	2.87
2010-11	2.37	2.86
2011-12	2.30	2.89
2012-13	2.39	2.92
2013-14	2.51	2.97
2014-15	2.49	2.98

Seita Scholar Cohort	ACT Variance	GPA Variance
2008-09	3.38	.25
2009-10	3.17	.11
2010-11	3.09	.20
2011-12	3.12	.24
2012-13	3.13	.19
2013-14	4.0	.17
2014-15	3.71	.27

Support

- **Student Leadership and Employment Opportunities**
 - Leadership retreats, paid internship opportunities, scholarships, Peer Leader and Undergraduate Assistant to the Director positions
- **Identity Programing**
 - Women's group (Lady Butterflies), Emerging Men Initiative (EMI), Seita Scholars Pride (supporting LGBTQA scholars), Parent's group (Parents' Future), Registered Student Organization (RSO)
- **Career Mentors**
- **Academic Support**
 - First year seminar course, specialized courses (HOL 4970, UNIV 1030, GPS), midterm grade reporting

Support

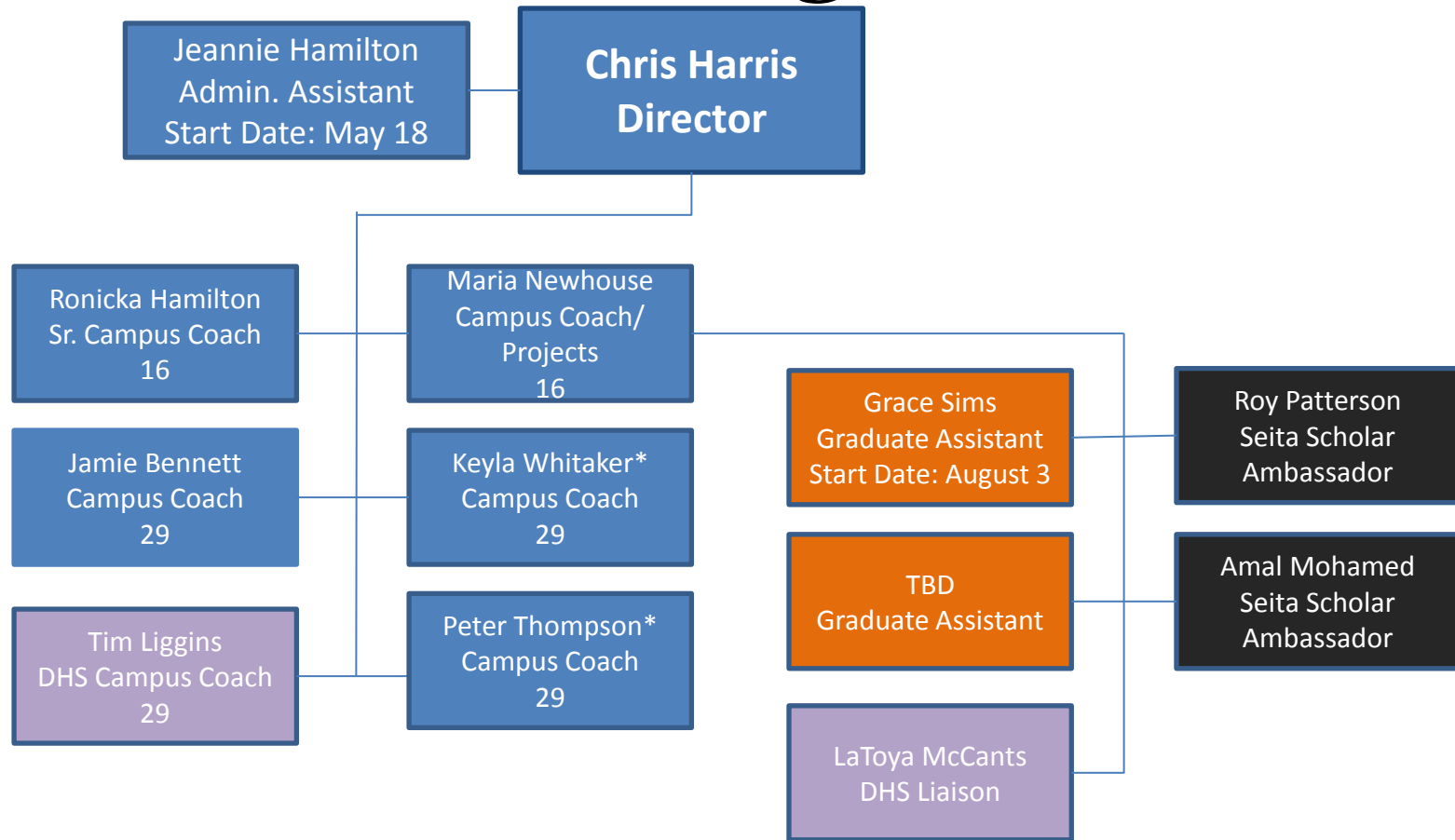
Campus Coaches (6)

- Every student has a coach
- 24 hour on call support
- Assist with connecting with resources and navigating campus
- Full-time professional staff
- Foster care experience
- Student-centered philosophy
- Focus on strengths of student
- Relationship Centered
- System Support & Advocacy
- Collaborative Approach
- Accessibility

DHS Liaison (1)

- Secondary worker
- YIT (Youth in Transition)
- ETV (Education Training Voucher)
- Medicaid
- Bridge Card
- Direct access to the Department of Health & Human Services

Seita Scholars Organization Chart



DHS Staff
WMU Staff
Graduate Asst.
Student Workers
Research Staff
*Terminal Staff

GO WEST.



Center for Fostering Success
WESTERN MICHIGAN UNIVERSITY

Eligibility, Application Process and Transition to WMU

PROGRAM ADMISSIONS

wmich.edu/fosteringSUCCESS

Eligibility Guidelines

- ETV or MET Eligible
- High school diploma or GED
- Students age 17-25
- Enrolled at WMU

GO WEST.

Financial Aid

Typical Seita Scholar Award Package

\$5,550 Pell Grant

\$1,000 SEOG

\$11,000 WMU Seita Scholarship

\$4,000 Education Training Voucher

\$2,000 WMU Work-Study

\$23,550

(With careful financial management, it's possible to graduate loan free!)

Note: This only covers 8 months of a students year, it does not cover winter and summer breaks.



GO WEST.



Center for Fostering Success
WESTERN MICHIGAN UNIVERSITY

Achievement Benchmarks, Graduation Rates and Outcomes

OUTCOMES

wmich.edu/fosteringSUCCESS

Achievement Benchmarks

	Foster Youth	General Populations
Graduate High School	46%	70%
Attend College	7-13%	42%
Earn Degree in 6 Years	2-4%	24%

1 National Association of Counties. (2008). Youth aging out of foster care: Identifying strategies and best practices. Retrieved from <http://www.dshs.wa.gov/pdf/ca/YouthAgingoutofFoster.pdf>

Seita Scholars Graduation Rates

Seita Scholar Cohort	Number in Cohort	Number of WMU Graduates	% Graduated from WMU	Number on Track to Graduate	% on Track to Graduate from WMU*
2008-09	53	19	36%	1	38%
2009-10	50	18	36%	4	44%
2010-11	55	7	13%	13	36%
2011-12	57	6	11%	27	58%
2012-13	47	1	2%	27	60%
2013-14	42	-	-	31	74%
2014-15	41	-	-	37	90%

- *Number includes WMU graduates (column D) as of the beginning of **Spring 2015**
- 21 Seita Scholars are on track to graduate by the end of Summer II session

Only 2%-4% of Foster Care Alumni graduate from a post-secondary institution nationally.**

**Source: Casey Family Programs. (2010). *Supporting success: Improving higher education outcomes for students from foster care*. Retrieved from: <http://www.casey.org/resources/publications/SupportingSuccess.htm>

Outcomes

- **Increased graduation rates among alumni of foster care**
 - By the end of summer, the Seita Scholars Program will have more than 70 graduates!
- **Seita Scholars have:**
 - Made the Dean's List (26 in fall 2014)
 - Been selected as Presidential Scholars
 - Studied abroad in a variety of countries including Italy, Spain, Australia, and Argentina.
 - Served as assistants in the Residence Halls on campus.
 - Served on local and state foster care review boards
 - Participated in a variety of club and varsity sports.
 - Held leadership positions in student organizations across campus.
 - Spoken at conferences across the nation and advocated for youth in foster care!
 - Spoken with state and national legislators

GO WEST.



CONTACT US

Chris Harris

Director

Office: (269) 387-8346

Email: chris.harris@wmich.edu

For information about the volunteer program or donating to the Seita Scholars Program:

Maria Newhouse

Campus Coach

Office: (269) 387-8381 | Cell: (269) 993-6665

Email: maria.r.newhouse@wmich.edu

Website: <http://wmich.edu/fosteringssuccess/seita/volunteering>