

Exploring Gambling as a Public Health Matter

**Jennifer Reynolds
University of Toronto
Canada**

Exploring Gambling as a Public Health Matter

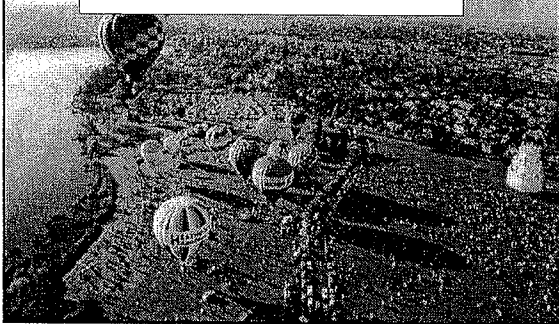
Jennifer Reynolds M.Ed.
David A. Korn MD CAS
Public Health Gambling Project
Department of Public Health Sciences
University of Toronto, Canada

Gambling: What are the Odds for Indiana Families?
Center For Families, Purdue University
November 21, 2005

“Looking Out for More Efforts to Expand Gambling”

The Indianapolis Star – July 31, 2005

The Gambling Landscape PUBLIC HEALTH PERSPECTIVE A Broad Overview

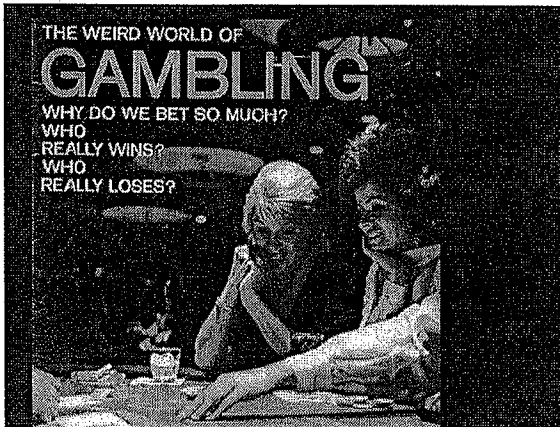


Acknowledgements

- David Korn
- Lorne Tepperman
- Harvey Skinner

Outline of Presentation

- Gambling expansion
- A public health perspective
- Family focus on gambling



Problem Gambling

"An addictive illness...in which the subject is driven by an overwhelming, uncontrollable impulse to gamble. The impulse progresses in intensity and urgency, consuming more and more of the individual's time, energy and emotional and material resources. Ultimately, it invades, undermines and often destroys everything that is meaningful in his life."

Robert Custer & Harry Milt
When Luck Runs Out: Help for Compulsive Gamblers and Their Families, 1985

Gambling Expansion

**Worldwide
\$900 billion revenue
to governments from citizens
through wagering loses**

*The Collapse of Globalism
John Ralston Saul, 2005*

Definition of Gambling

Gambling is...

Risking money or something of value on an outcome of an event involving chance when the probability of winning or losing is less than certain.

Gambling Occurs in...

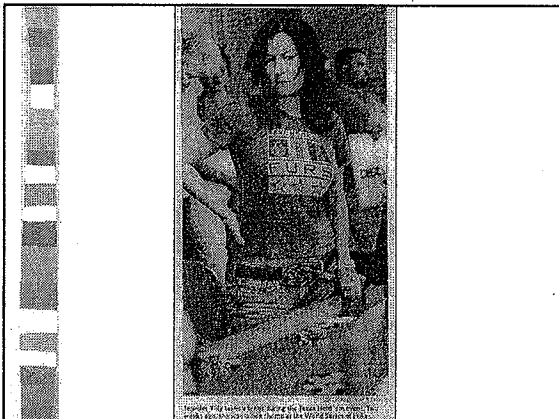
- School yards
- Casinos
- Corner Stores
- Racetracks
- Internet
- Homes
- All age groups
- All socio-economic groups
- All cultural backgrounds

Forms of Gambling

- Lotteries
- Casino's
- Scratch tickets
- Nevada tickets
- Raffles
- Games of Skill
- Sports Betting
- Cards
- Bingo
- VLT's
- Slots
- Stock speculation
- Internet
- Pari-mutuel betting

Factors Driving Gambling Expansion

- Revenue: Financial needs facilitated through public policy, enabling legislation & venue expansion
- Technology: VLT/EGM, Web, TV
- Economic Growth: Local community development
- Demand: Advertising, marketing & media exposure



*At any one time,
more people are playing poker on the
internet than in all the USA casinos
combined*

***The Costs & Benefits
Of Gambling Expansion***

- Benefits**
- Socialization & leisure activity
 - Hopefulness
 - Stress management
 - Local jobs
 - Government revenue
 - Charity & local community revenue
 - Aboriginal economic development

- Costs**
- Gambling addiction / problem gambling
 - Family dysfunction
 - Substance abuse
 - Mental disorders
 - Suicide
 - Financial difficulties & poverty
 - Criminal behavior

Canadian Tax Foundation
Economic Study of Gambling

COSTS = 3.6
BENEFITS = 9.1

NET BENEFIT: = 5.5
(billions of dollars CAN)

Gambling & Governments in Canada, 1909-1998
Canadian Tax Foundation, 2000

Canadian Tax Foundation
Economic Study of Gambling

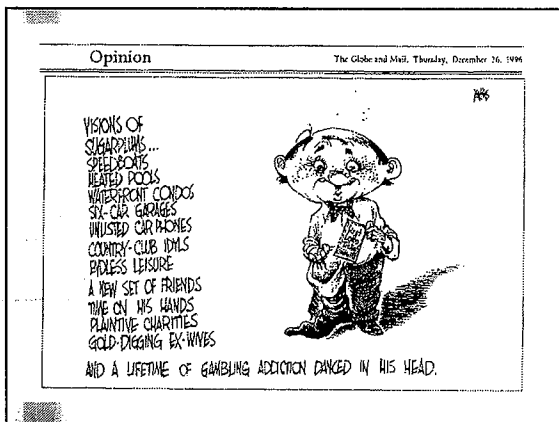
Costs:

- >Crime related
- >Health related
- > Family related
- >Job related

Benefits

- >Employment related
- >Government revenues
- >Consumer surplus associated with gambling demands & activities

**Conclusion of study found that the benefits of gambling in Canada greatly outweigh the costs..*



**Public Health Perspective
On
Gambling**

"The way you define a problem
will determine what you do about it."

Dr. Jonathan Mann
GLOBAL AIDS Program
World Health Organization

Public Health

Public health looks at the **factors and forces (determinants)** that cause illness and injury at the **level of the community**.

To make a real difference in public health, you have to **change the culture** of modern society.

John Frank MD, Director, Institute for Population and Public Health,
Canadian Institutes of Health Research

GAMBLING connotes...

Problem
Epidemic
Compulsion
Public Health Issue / Threat
Disease / Disorder
Entertainment
Revenue
?

Gambling and Public Health

Study of the distribution & determinants of ***gambling-related health problems*** in a defined population and the organized public measures to ***prevent, eliminate or control*** its occurrence, spread and impact

"The enduring value of a public health perspective is that it applies **different 'lenses'** for *understanding* gambling behavior, *analyzing* its benefits and costs, as well as *identifying* strategies for action."

*Harvey Skinner, Chair,
Department of Public Health Sciences,
University of Toronto
Journal of Gambling Studies, 2000*

Public Health "Lenses" on Gambling

Multidisciplinary & interdisciplinary sciences

- Epidemiology & biostatistics (distribution)
- Population health/social epidemiology (determinants)
- Community health/development (actions)

- Environmental health/health ecology
- Workplace health
- Behavioral health (risks/problems)

- Health economics (money)
- Behavioral neurology (neuro-imaging)
- Health Promotion (communication/social marketing)

Value of a Public Health Perspective on Gambling

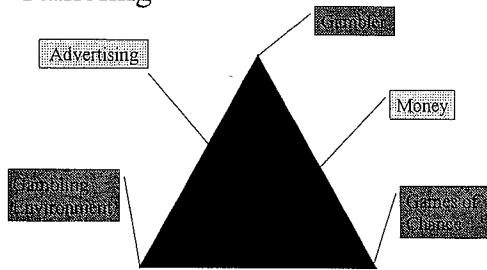
- Addresses gambling as a whole not solely problem gambling
- Upstream emphasis
- Strategic orientation
- Commitment to partnerships
- Stakeholder engagement
- Multiple interventions
- Balances costs and benefits

Kum, D. & Shaffer, H. (1999). Gambling and the Health of the Public: Adopting a Public Health Perspective. *Journal of Gambling Studies*, 15(4), 289-365.

The Gambling Continuum



Determinants of Problem Gambling



Kum, D. & Shaffer, H. (1999). Gambling and the Health of the Public: Adopting a Public Health Perspective. *Journal of Gambling Studies*, 15(4), 289-365.

Pathways into Gambling Addiction

- Biogenetic Predisposition
- Maladaptive Coping
- Mental Illness & Addiction
- Social Exposure

Public Health Strategy for Gambling

Gambling Strategic Goals

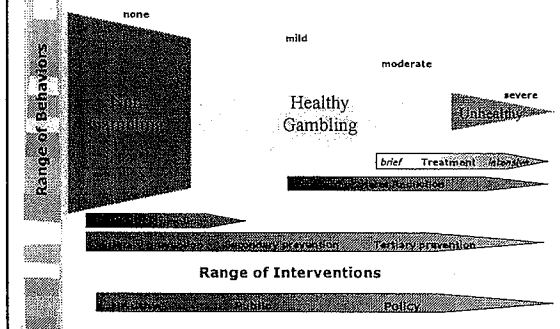
- **Promote:** informed, balanced attitudes & behaviors towards gambling & gamblers
- **Prevent:** gambling related health problems
- **Protect:** vulnerable & at risks populations

Korn, D. & Shaffer, H. (1999). Gambling and the Health of the Public: Adopting a Public Health Perspective. *Journal of Gambling Studies*, 15(4), 289-365.

Guiding Principles for Gambling Action

- Primacy of Prevention
- Healthy Public Policy
- Shared Responsibility

Framework for Public Health Action



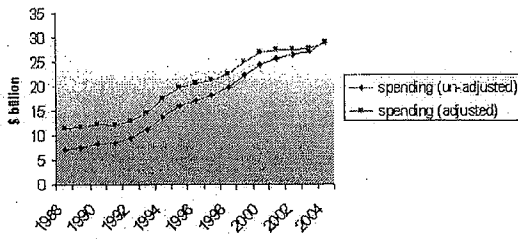
Epidemiology and Social Ecology

UNITED STATES The Gambling Economy

In 1996, gross gambling revenues in the USA were \$47.6 billion.

Greater than combined revenues of film box office, recorded music, cruise ships, spectator sports & live entertainment.

Figure 1. U.S. Consumer Spending on Commercial Casino Gaming, 1988-2004 (Adapted from the AGA's "State of the States" report, 1999-2009)

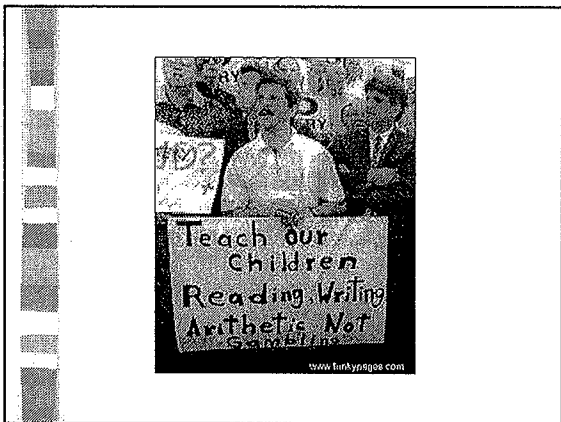


Indiana State Gaming Statistics

- 10 operating casino's (riverboat)
- 16,555 casino employees
- Gross casino gaming revenue = \$2.36 billion
- Gaming tax revenue = \$702.7 million

Indiana Gaming Commission, as viewed on American Gaming Association Website. (www.americangaming.org/industry/state/statistics/emf?stateid=9)

Family Focus on Gambling



The Literature: Role of Family Influences

- Parental gambling is a risk factor for problem gambling
- Parental modeling, tolerance, encouragement, participation
- Problem gambling can start early, through gambling with parents
- Grandparent gambling, sibling gambling are also risk factors

(Brook et al, 1986; Lau et al, 1990; Jacobs, 1989; Gupta & Derevensky, 1997)

The Literature: Effects of Gambling on Marriage

- Some positive effects...
- Many negative effects:
 - Causes financial problems
 - Reduces cohesion, satisfaction
 - Increases marital conflict
 - Harms health of gambler, spouse

(National Council of Welfare, 1996; Lorenz & Shuttlesworth, 1983; Lorenz & Yaffee, 1988)

@ Home with Gambling Study

Lorne Tepperman, PhD
David Korn, MD

Funded by the Ontario Problem Gambling Research Centre

Research Purpose

- To explore patterns of gambling within families and within ethno-cultural groups in the Greater Toronto area.
- Ethno-cultural groups included in the study are:
 - Aboriginal
 - British Isles
 - Caribbean
 - Chinese
 - Latin American
 - Russian

Participants

- Sample: convenience, snowball, self-selection in Greater Toronto area
- 360 = 6 groups X 60 respondents
- Face to face in respondent's language

- Finding the sample:
 - Community partners (e.g., family service agencies)
 - 18 interviewers
 - Advertisements, posters, flyers

The Interview Schedule

- Open- & closed-ended items
- SOGS to measure gambling
- Demographics
- Ethno-cultural identification
- Family patterns
- Gambling perceptions, practices

Findings – Intergenerational Transfer

- Children learn gambling practices and attitudes at home

- Children learn from parents, grandparents, siblings, uncles and aunts

- Pass these practices and attitudes to their children and grandchildren

Findings - Family Communication in Childhood

- Problem gamblers were more likely to have witnessed or heard about their parents gambling than non-problem gamblers
- Problem gamblers were more likely than non-problem gamblers to have witnessed or heard about their grandparents gambling
- Respondents who discussed their gambling with their children were more likely than other respondents to have children who gamble

Findings - The Beginnings of Problem Gambling

- Problem gamblers started gambling earlier than non-problem youth gamblers
 - more likely to remember their first game,
 - more likely to remember having won it
- Problem gamblers gambled when they were growing up
 - with friends, co-workers, siblings, non-family members, and others .

Extent of Problem Gambling, by Ethnicity

Percentage of Ontario sample with problem or moderate risk gambling

- Aboriginal..... 9.4
- Latin American..... 8.6
- Chinese..... 7.9
- Russian.....6.0
- Caribbean.....2.8
- British Isles.....2.7

Limitations of Study

- sample unrepresentative
- small numbers in each group
- need more information about
 - gambling practices
 - beliefs about gambling
 - financial and class position
 - quality of parenting, family life

Partner Influences on Gambling: An Exploratory Study

*Lorne Tepperman, PhD
David Korn, MD
Jennifer Reynolds, MEd*

Funded by the Ontario Problem Gambling Research Centre

Research Question

"In what ways, and with what degree of success, do Ontario adults attempt to regulate their partner's gambling behavior?"

- Do partners influence the problem gambling of their spouses?
- Can they influence their spouses to get treatment?

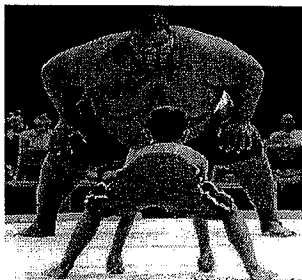
Participants

- 60 problem gamblers
- 60 spouses of problem gamblers
- 10+ couples
- self-selected in response to advertisement

Interview Schedule

- Administer 9-item CPGI problem gambling severity index
- Gambling/partner behavior
- Marital relations
- Network embeddedness
- Stages of Change
- Openness to treatment
- Financial decision making

TO ACHIEVE THE RIGHT BALANCE
ONE HAS TO BE NIMBLE, SMART &
STRATEGIC



Counterforce – Youthbet.net



Concluding Thoughts

- Gambling is a public health issue based on the evidence related to epidemiology, health and social costs and quality of life concerns
- Advances in the biological, behavioral and computer sciences will shape the gambling field
- Ontario has enormous talent, diverse programs, credible institutions and significant financial support to build upon
- Gambling represents a central and challenging opportunity for innovative public health interventions, strategic partnerships & new knowledge

“Everything should be made as simple as possible, but not one bit simpler.”

— Albert Einstein

Contact Information

Contact Information:
Public Health Gambling Project
University of Toronto
jennifer.reynolds@utoronto.ca
david.korn@utoronto.ca
Tel: (416) 978-8498

THE END
