



**MINNESOTA FAMILY
IMPACT SEMINARS**

**Options for a Responsive
and Accountable
Early Childhood Education System
in Minnesota**



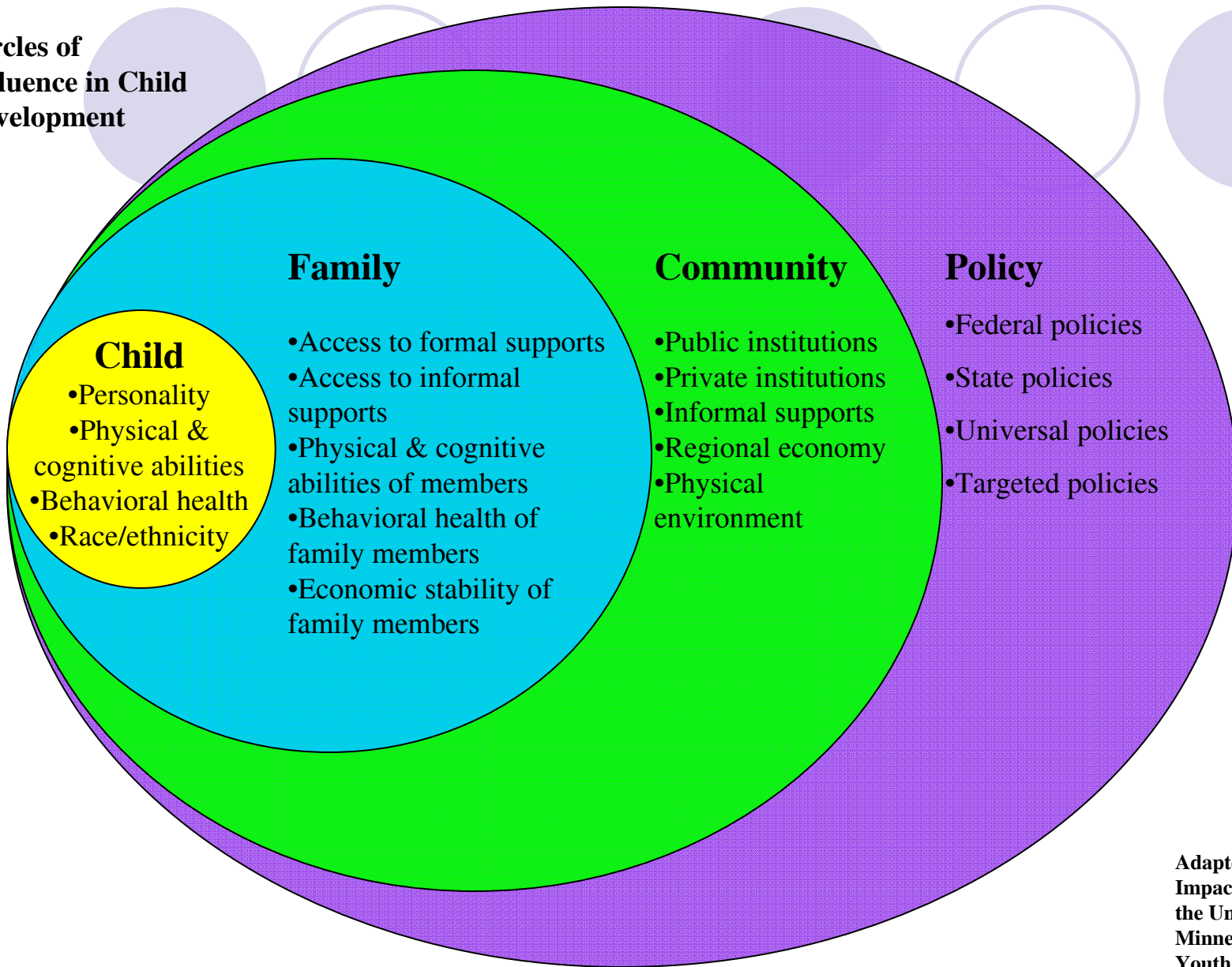
Early Childhood Policies from Ecological and Family Impact Perspectives

April 25, 2008

Karen Cadigan

cadigan@umn.edu

**Circles of
Influence in Child
Development**



Adapted for Family Impact Seminars by the University of Minnesota Children, Youth and Family Consortium. Based on Bronfenbrenner's Ecology of Human Development.



Child

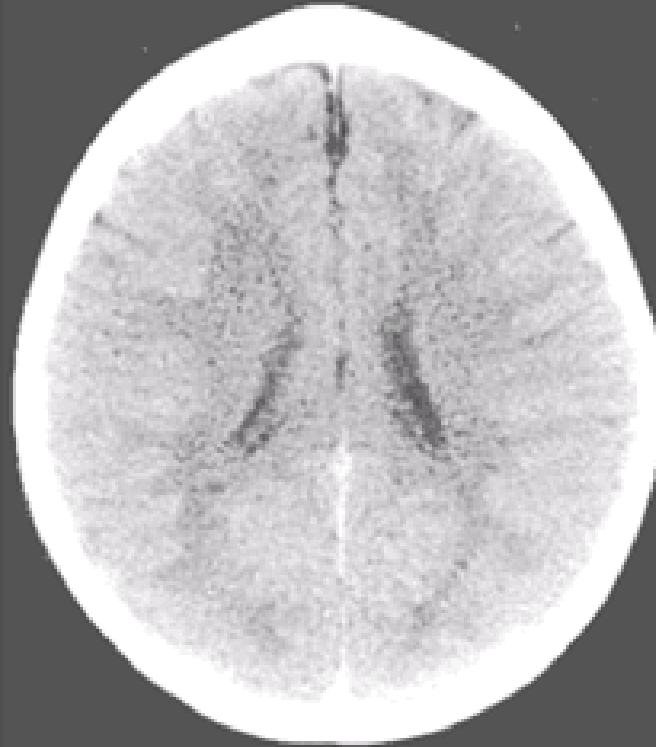
Environments influence children

- Environments include people, things, activities
- Important because nature and nurture both matter
- Environments influence learning and behavior throughout lifespan, but have particular importance during the early years

Child

A Dramatic Example

3-Year-Old Children



Normal

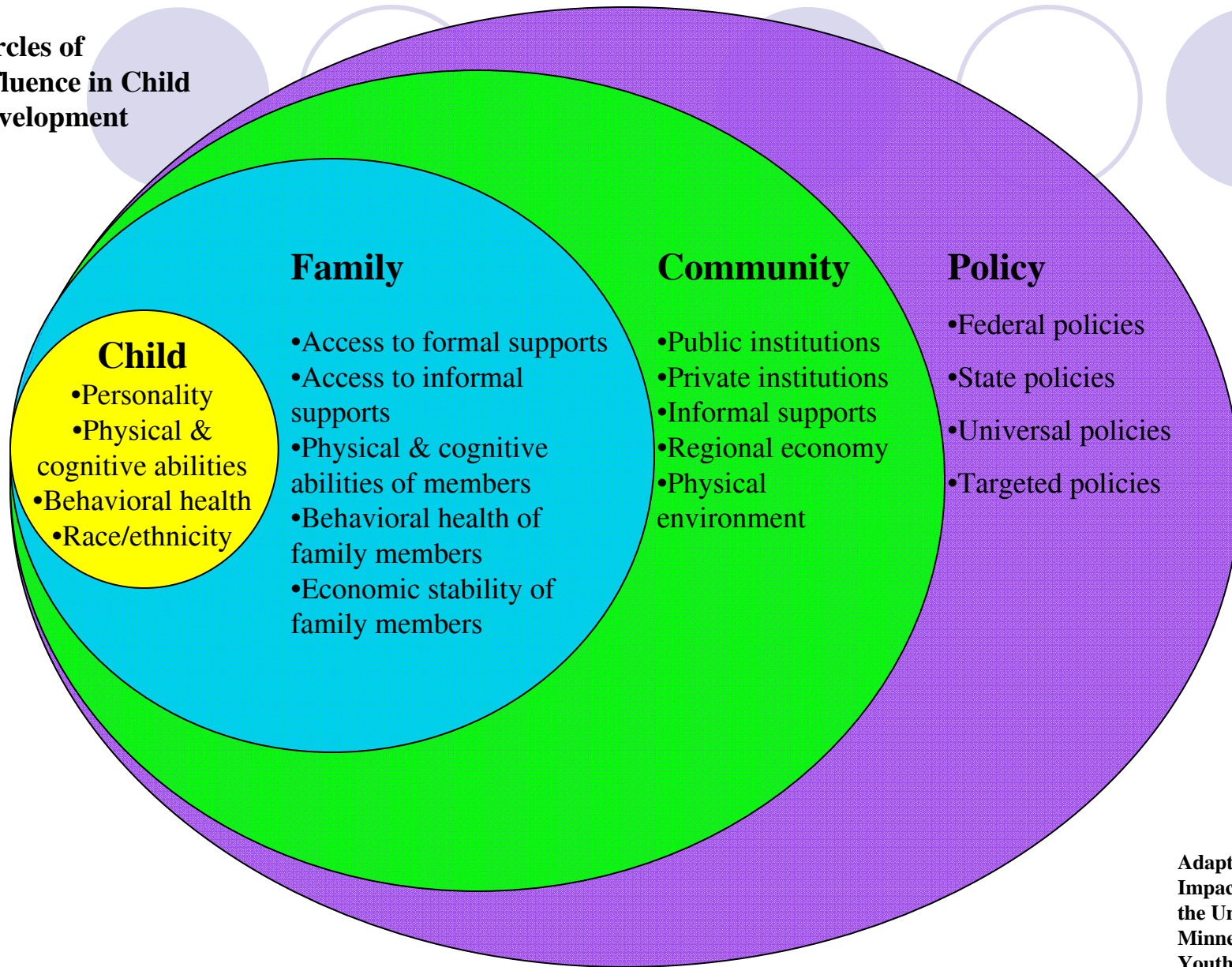
Child Trauma: An Atlas



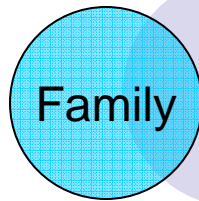
Extreme Neglect

1997 Bruce D. Perry, M.D., Ph.D.

**Circles of
Influence in Child
Development**



**Adapted for Family
Impact Seminars by
the University of
Minnesota Children,
Youth and Family
Consortium. Based on
Bronfenbrenner's
Ecology of Human
Development.**

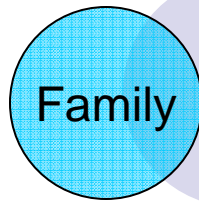


Policy influences Family influences Child

Family Focused Questions:

What can government and community institutions do to enhance the family's capacity to help itself and others?

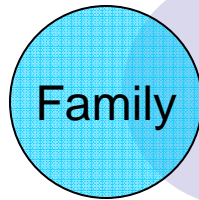
What effect does (or will) this policy (or program) have for families? Will it help or hurt, strengthen or weaken family life?



Policy influences Family influences Child

- In Minnesota...
 - Most families use some non-parental care for young children
 - Children five and under spend an average of 27 hours per week in non-parental care
 - As in nearly every other state, child care costs about as much or more than tuition at public college
 - Can be challenging to compare care

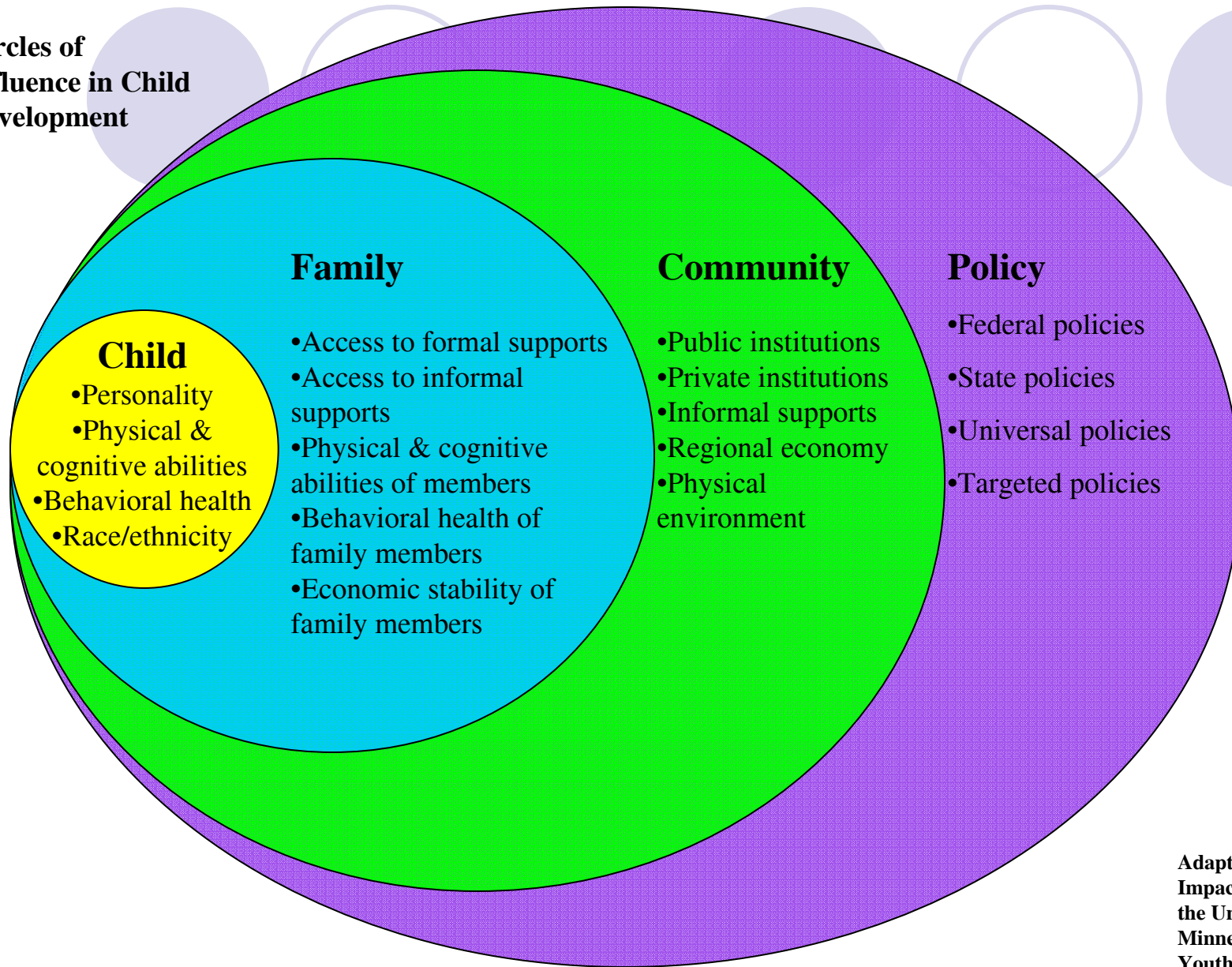
Minnesota Department of Human Services. November 2005. *Child Care Use in Minnesota*.



The Family Impact Checklist

- ✓ Family support & responsibilities
- ✓ Family partnership & empowerment
- ✓ Family membership & stability
- ✓ Family diversity
- ✓ Family involvement & interdependence
- ✓ Support of vulnerable families

**Circles of
Influence in Child
Development**



**Adapted for Family
Impact Seminars by
the University of
Minnesota Children,
Youth and Family
Consortium. Based on
Bronfenbrenner's
Ecology of Human
Development.**



MINNESOTA FAMILY IMPACT SEMINARS

Options for a Responsive and Accountable Early Childhood Education System in Minnesota